

Drukdrainage

Fysisch-Chemische metingen

januari 2021-december 2022



Waterschap
Rivierland

sterke dijken
schoon water

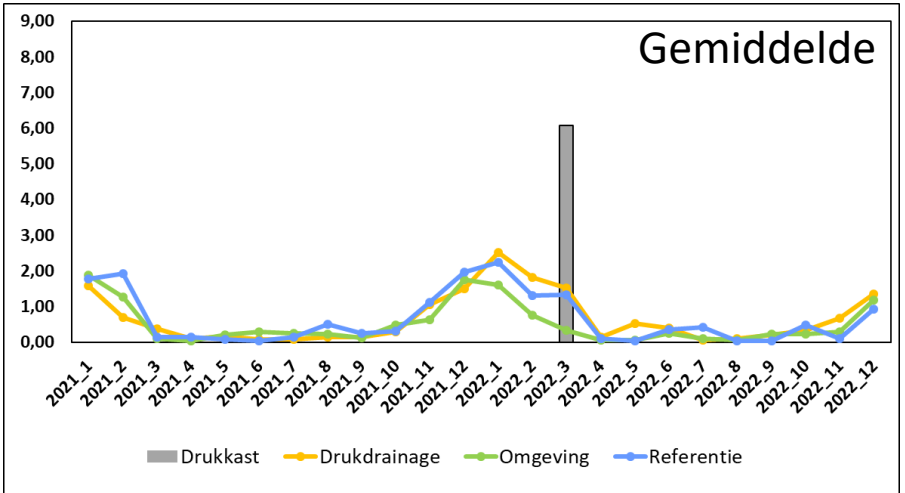
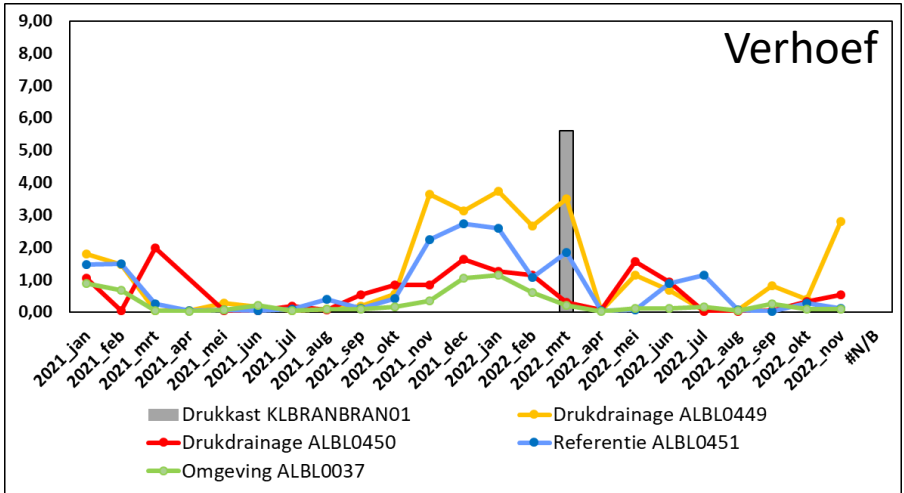
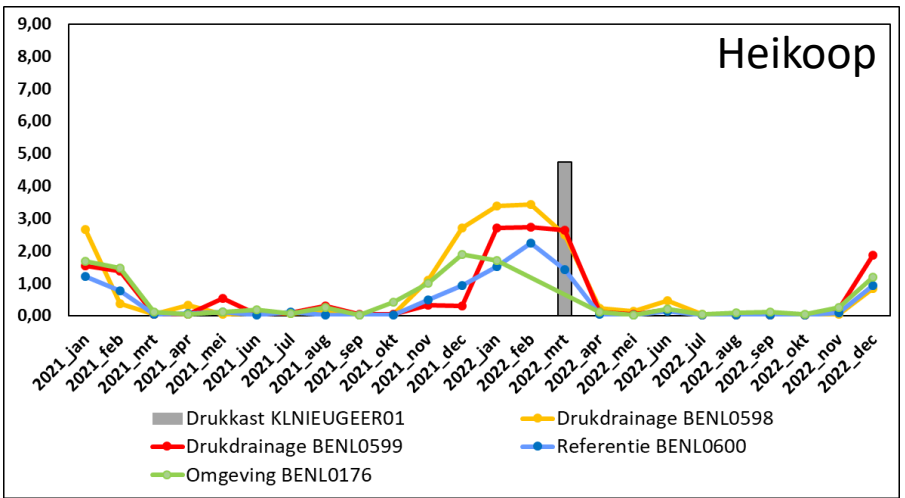
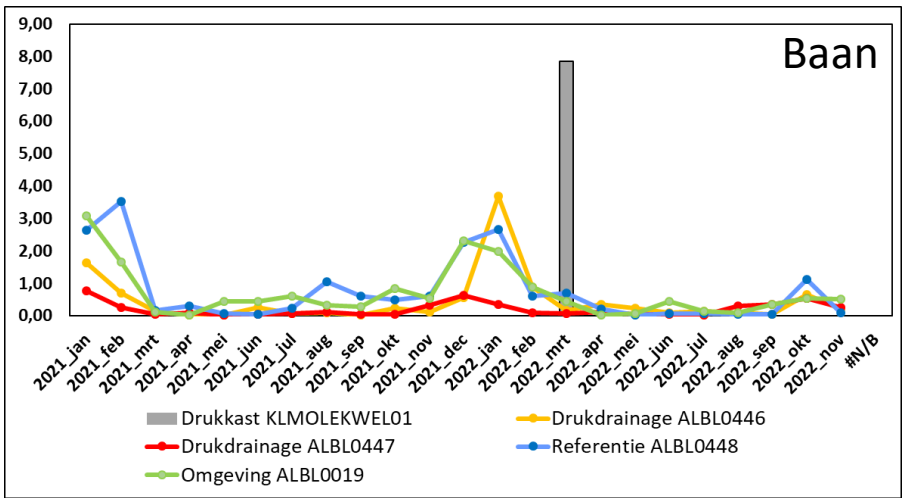


Ronald Gylstra

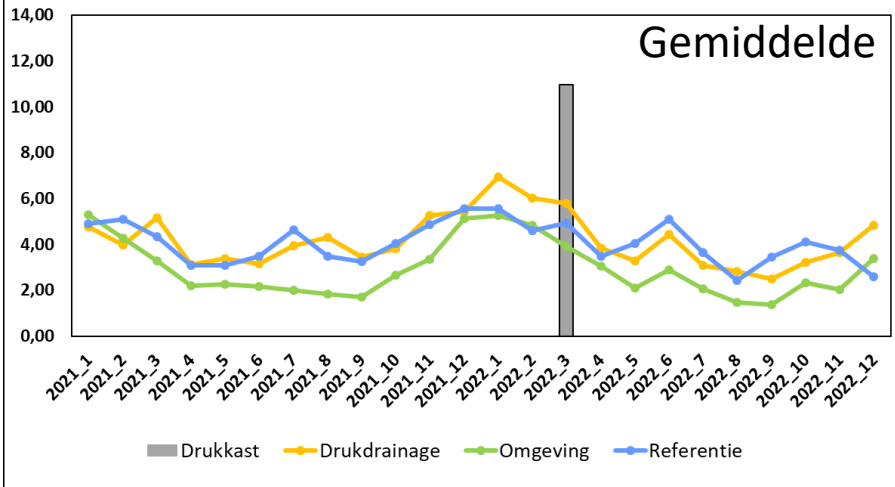
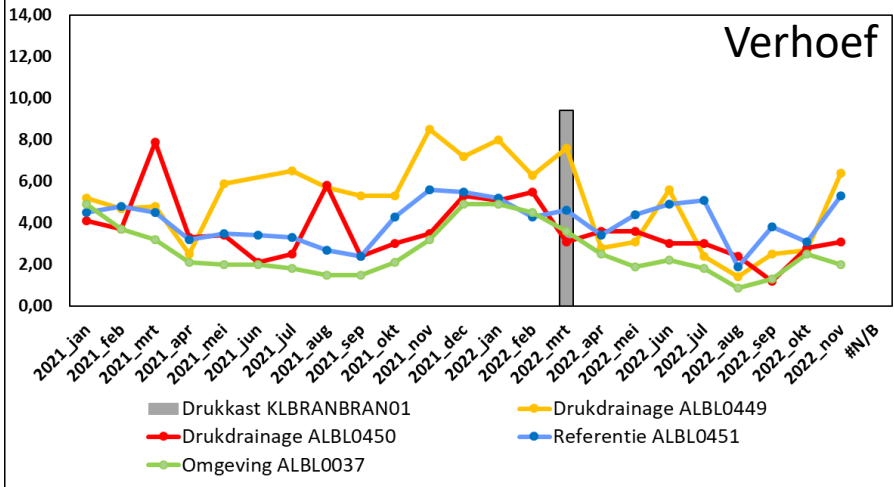
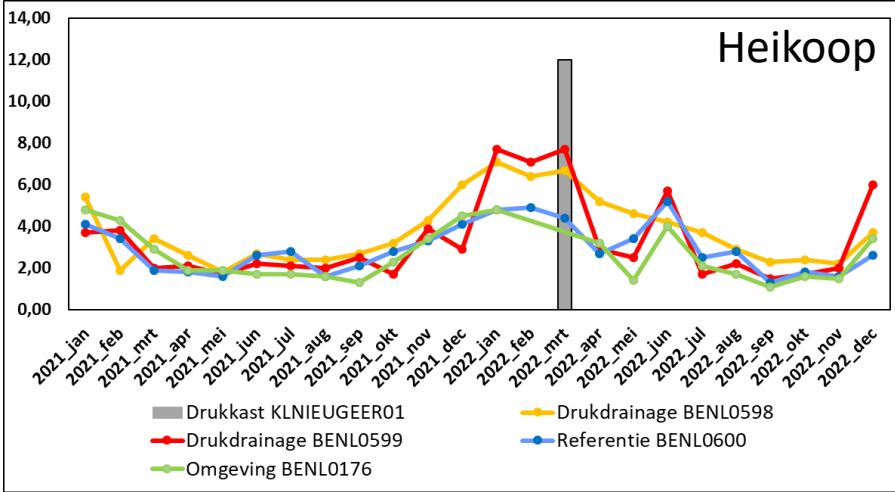
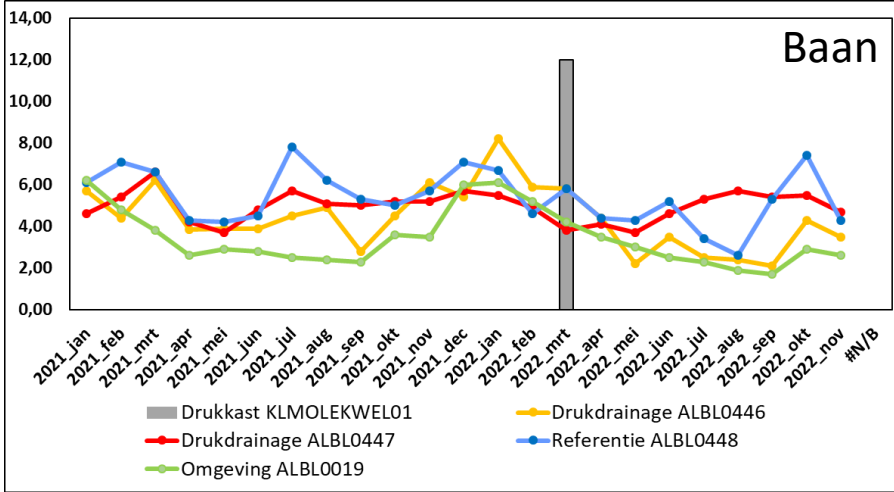
Wat is gemeten?

1. Fysisch-Chemisch. Maandelijkse metingen
2. Nutriënten, zouten, metalen, veldmetingen
3. Per deelnemer 2 meetpunten drukdrainage en 1 referentie
4. Per deelnemer 1 meetpunt in A-watergang in de omgeving
5. Metingen fysisch-chemisch in de kasten. Eenmalig op 4 mrt 2022
6. Vegetatie-opnames zomer 2021 en 2022 (Niet in deze presentatie).

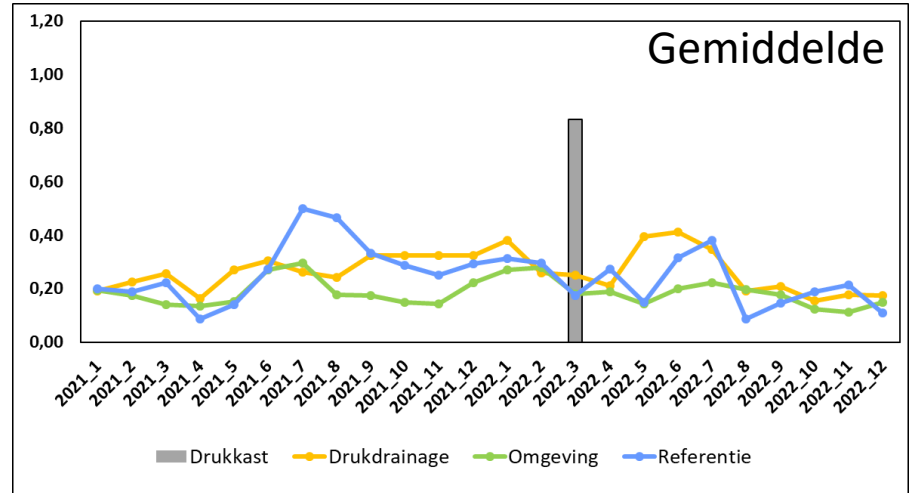
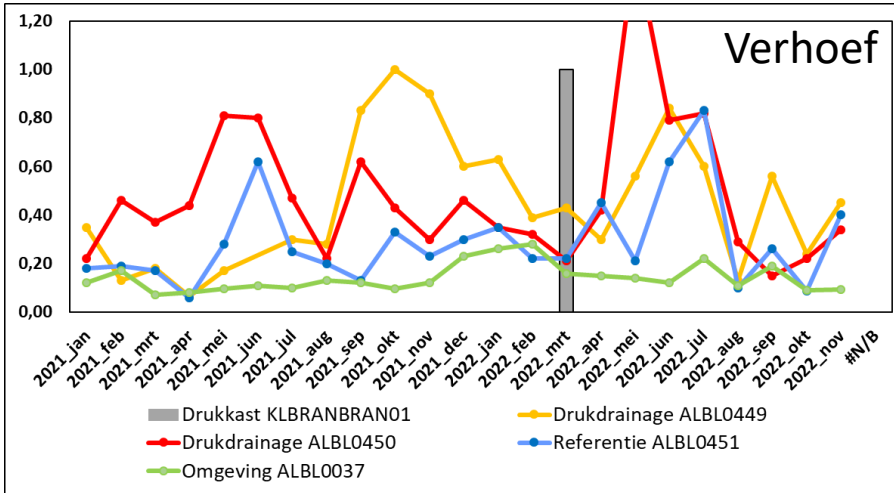
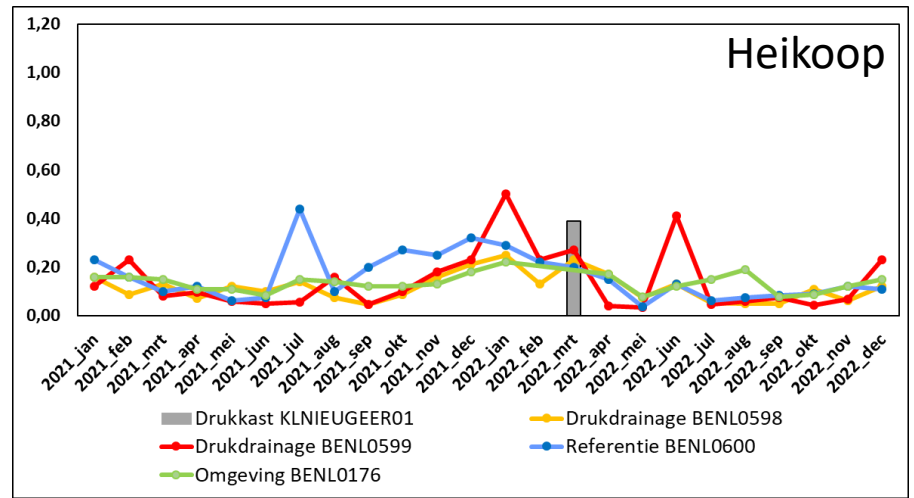
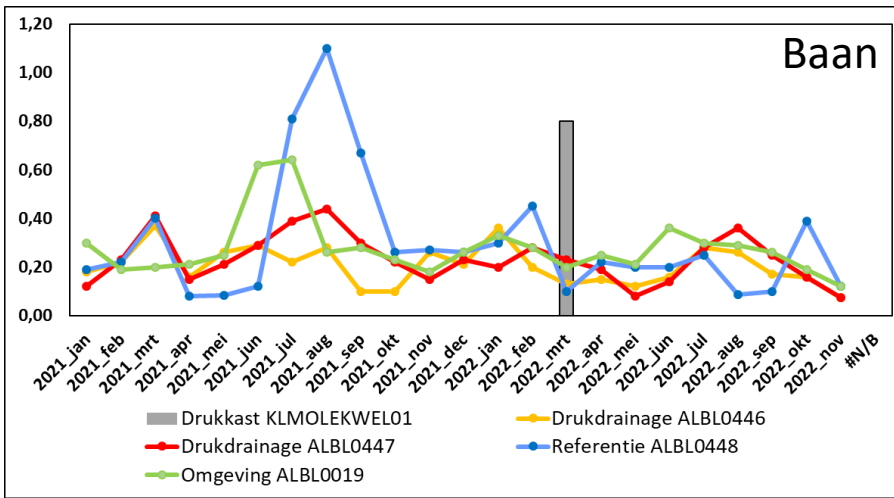
Nutriënten, Ammonium (NH4). Norm = 0,304 mg/L, jaargemiddelde



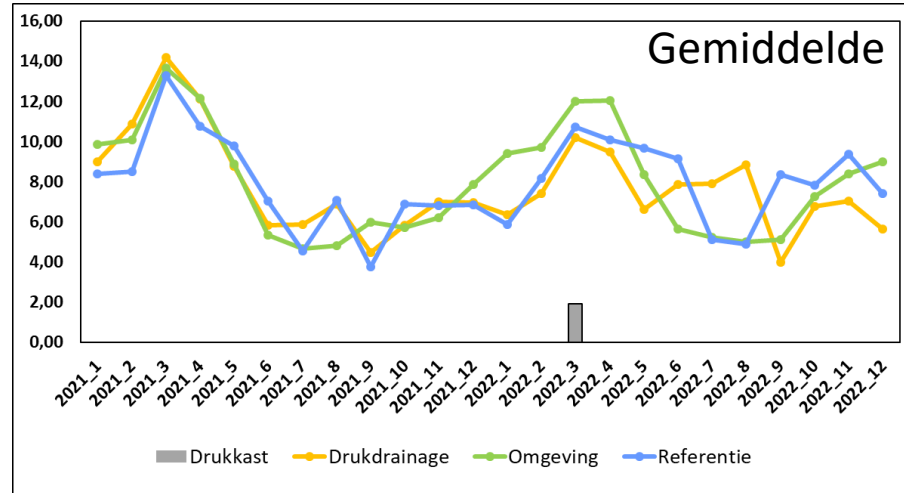
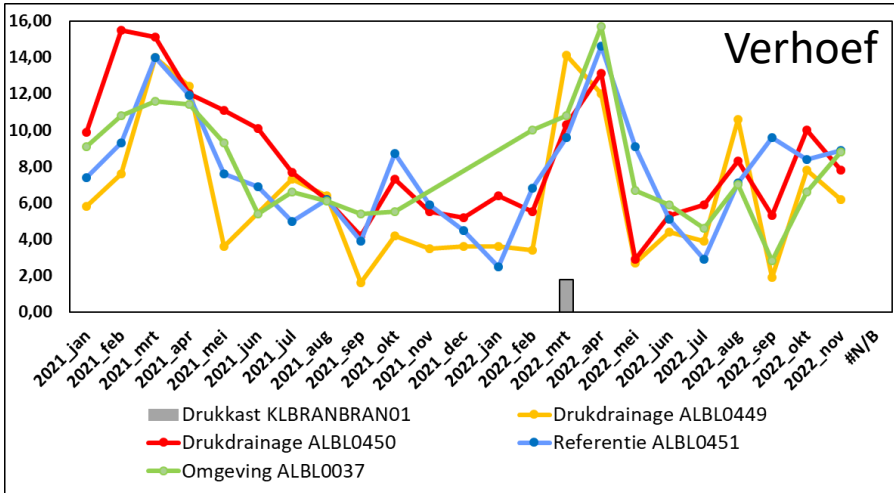
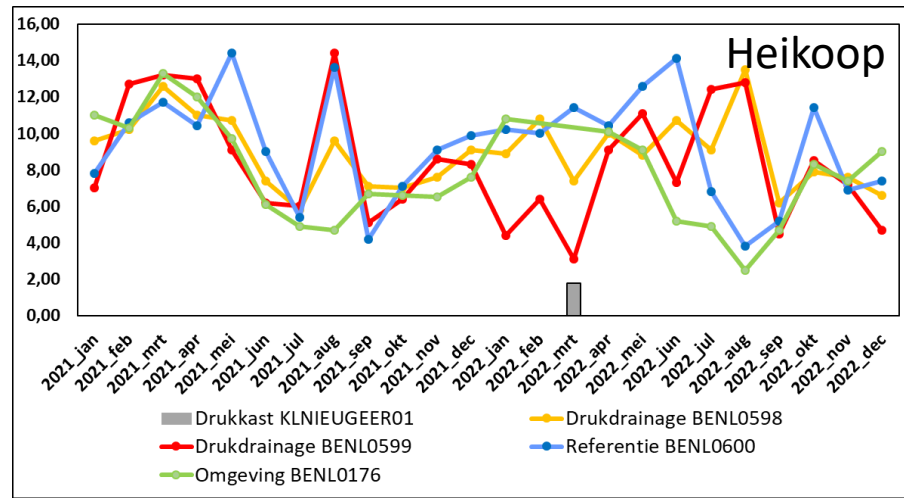
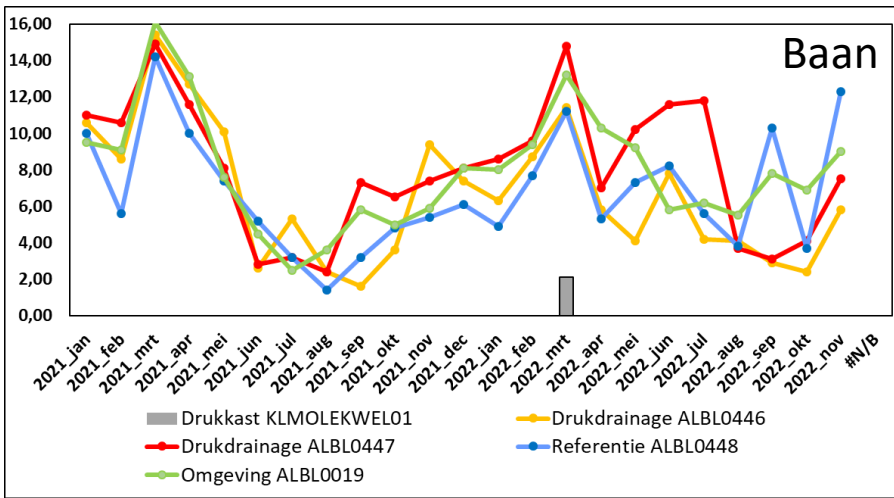
Nutriënten, Stikstof-totaal (N-tot). Default-norm = 2,4 mg/L (zomergemiddelde)



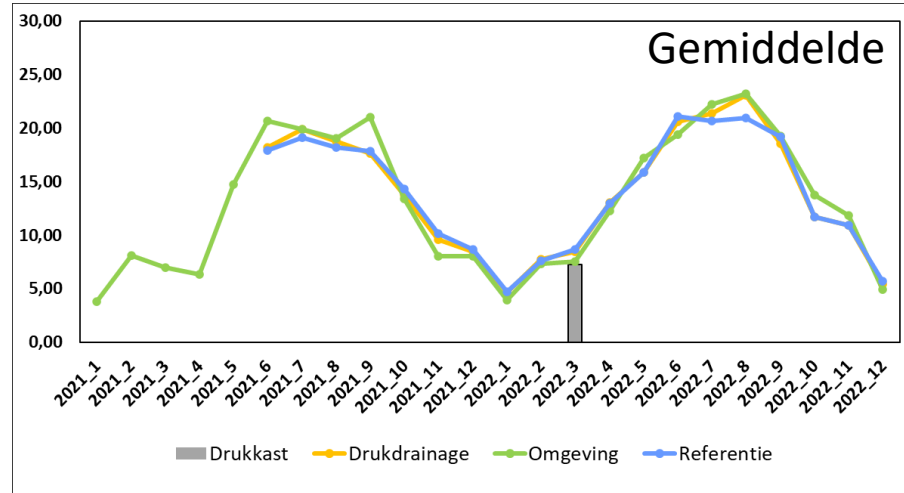
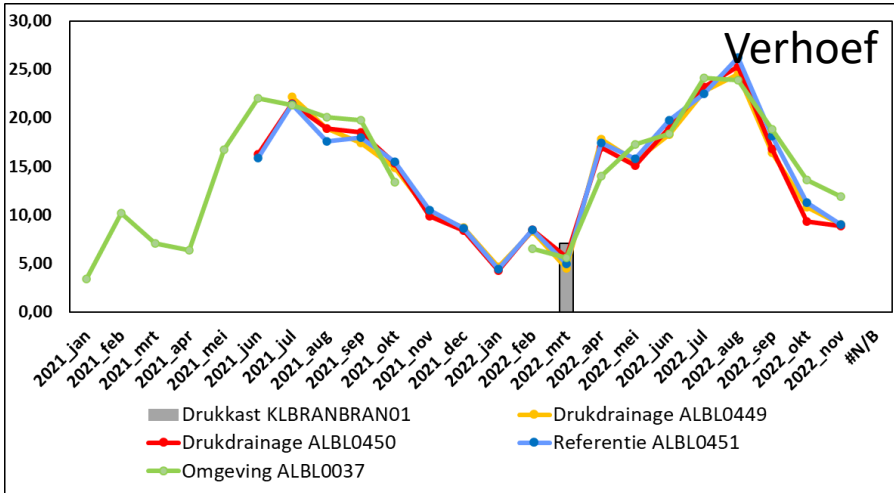
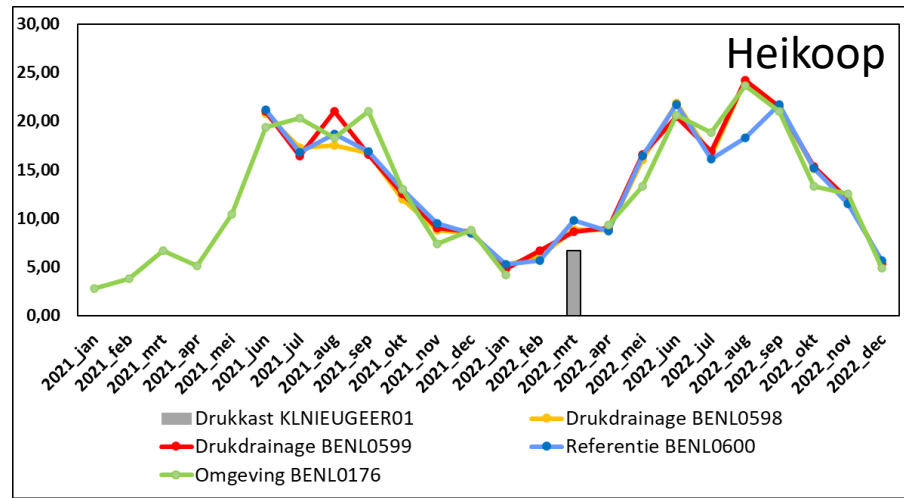
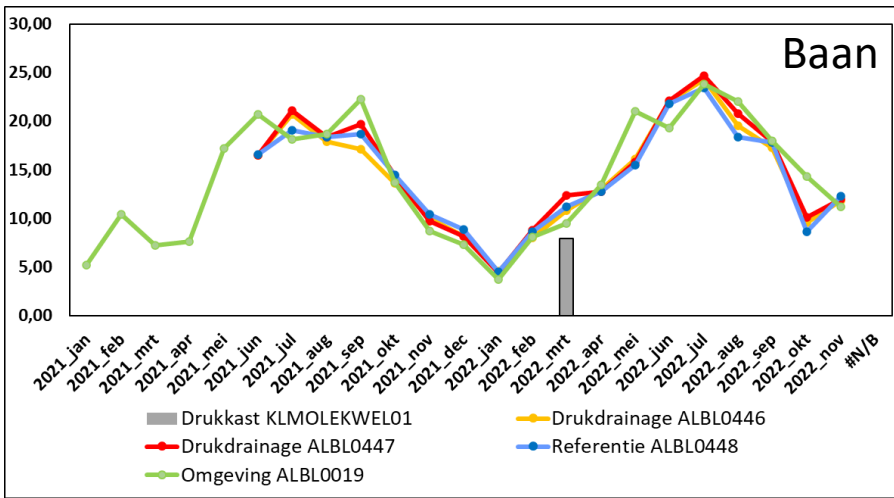
Nutriënten, Totaal-fosfaat (P-tot). Defaultnorm = 0,22 mg/L (zomergemiddelde)



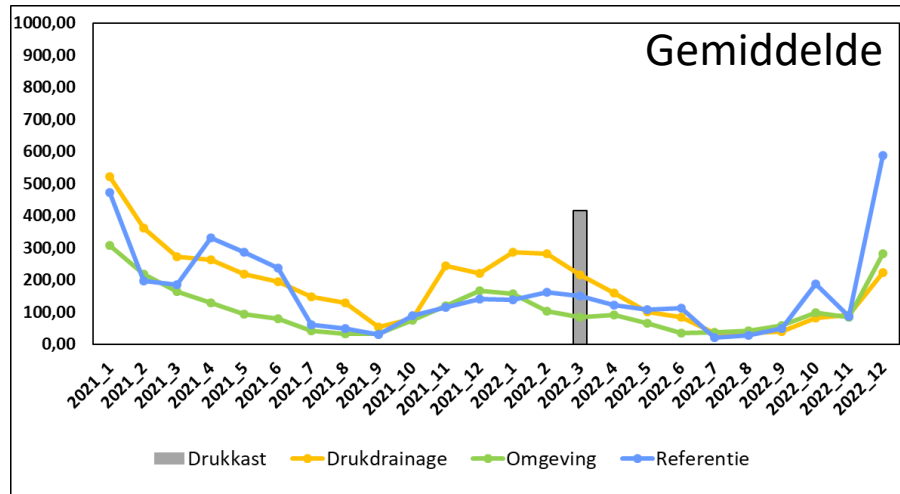
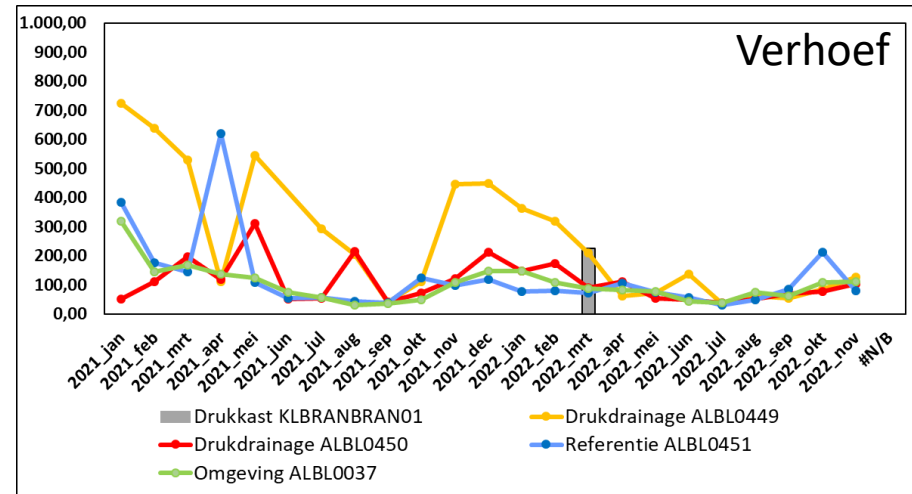
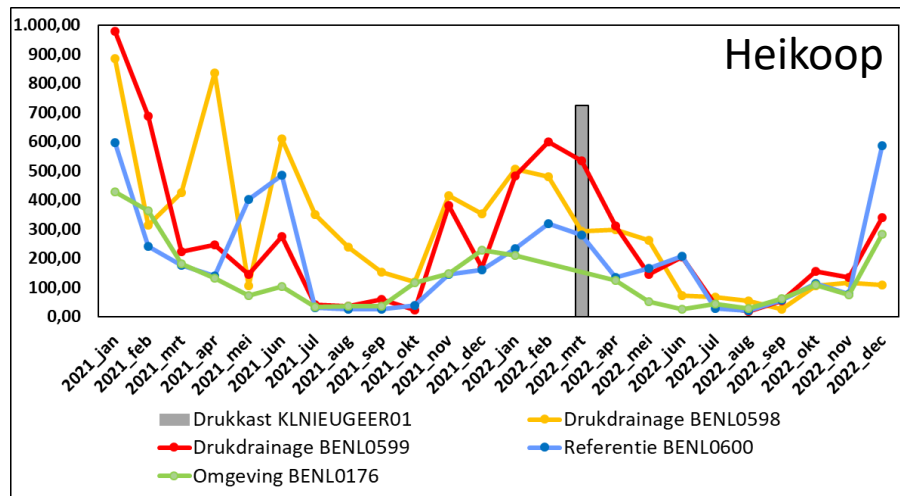
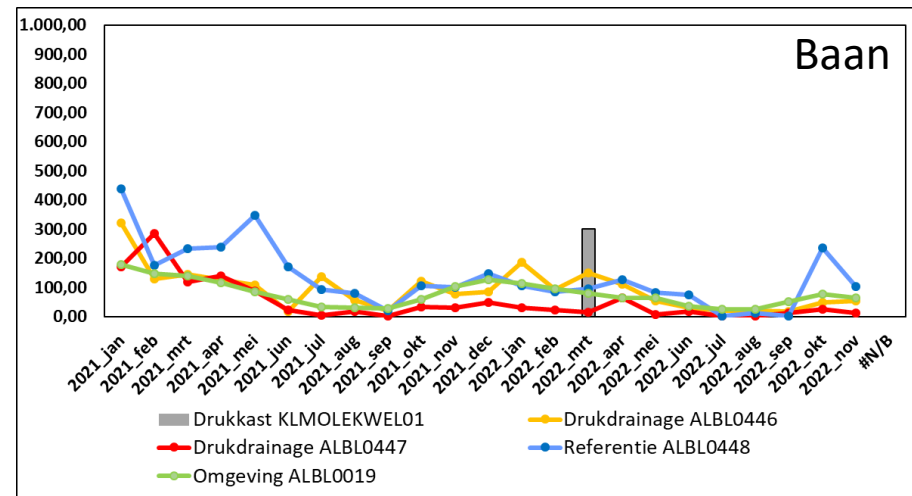
Veldmeting, Zuurstof (mg/L). Norm > 5 mg/L



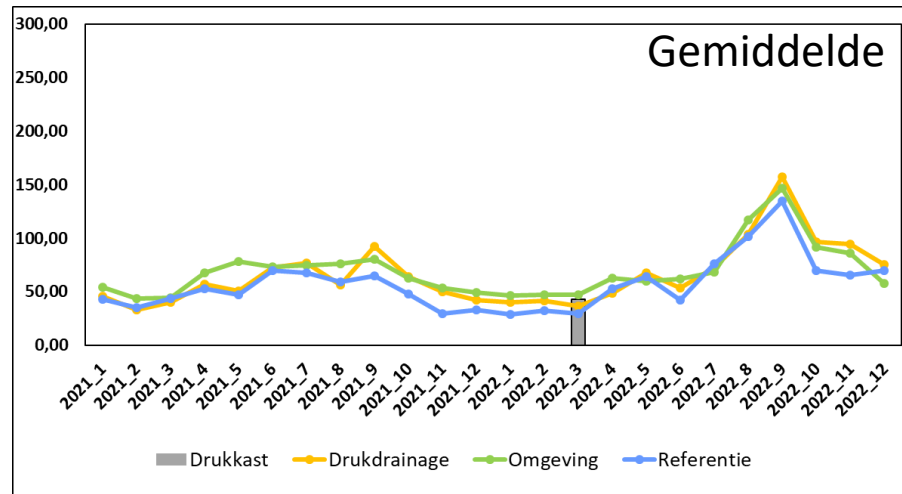
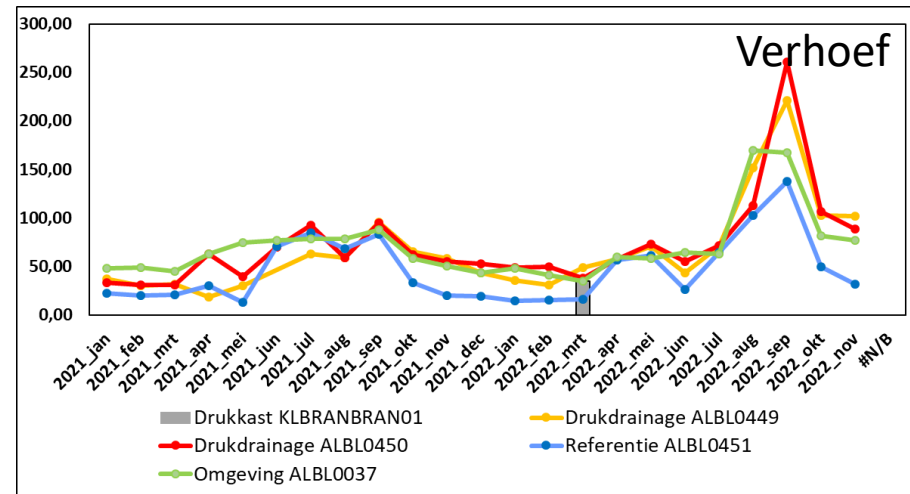
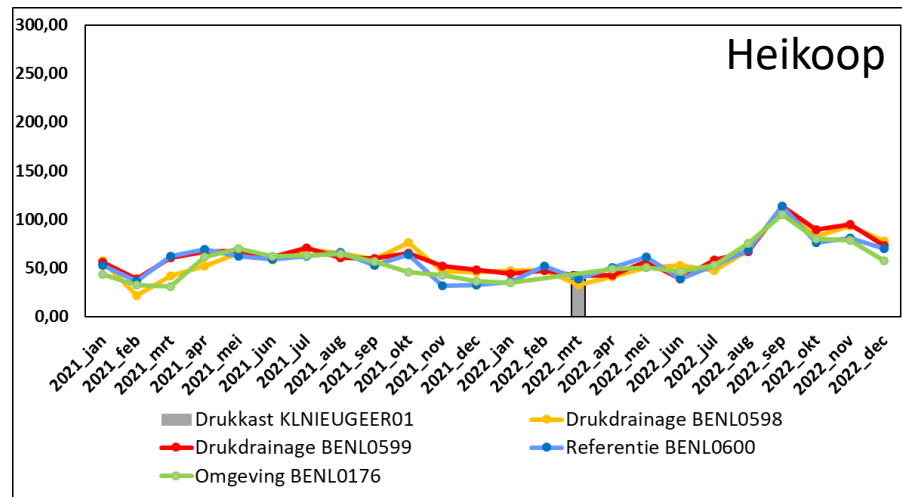
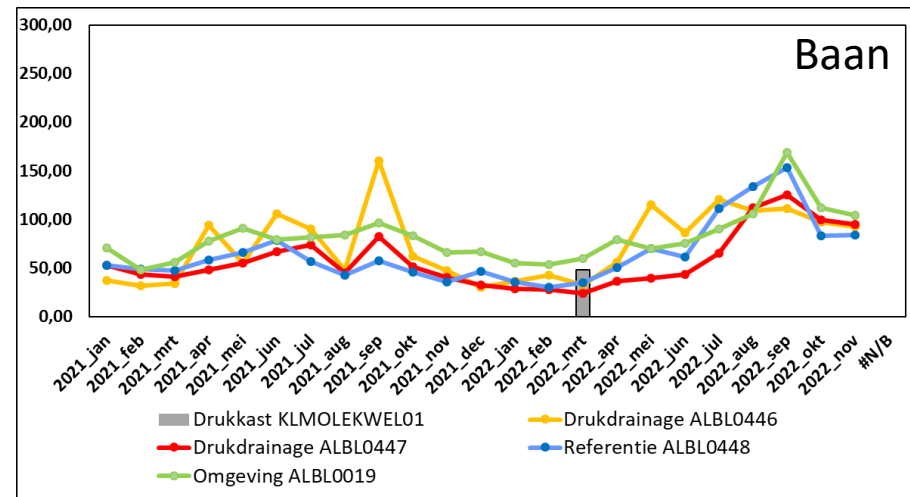
Veldmeting, Temperatuur (°C). Norm 25 °C



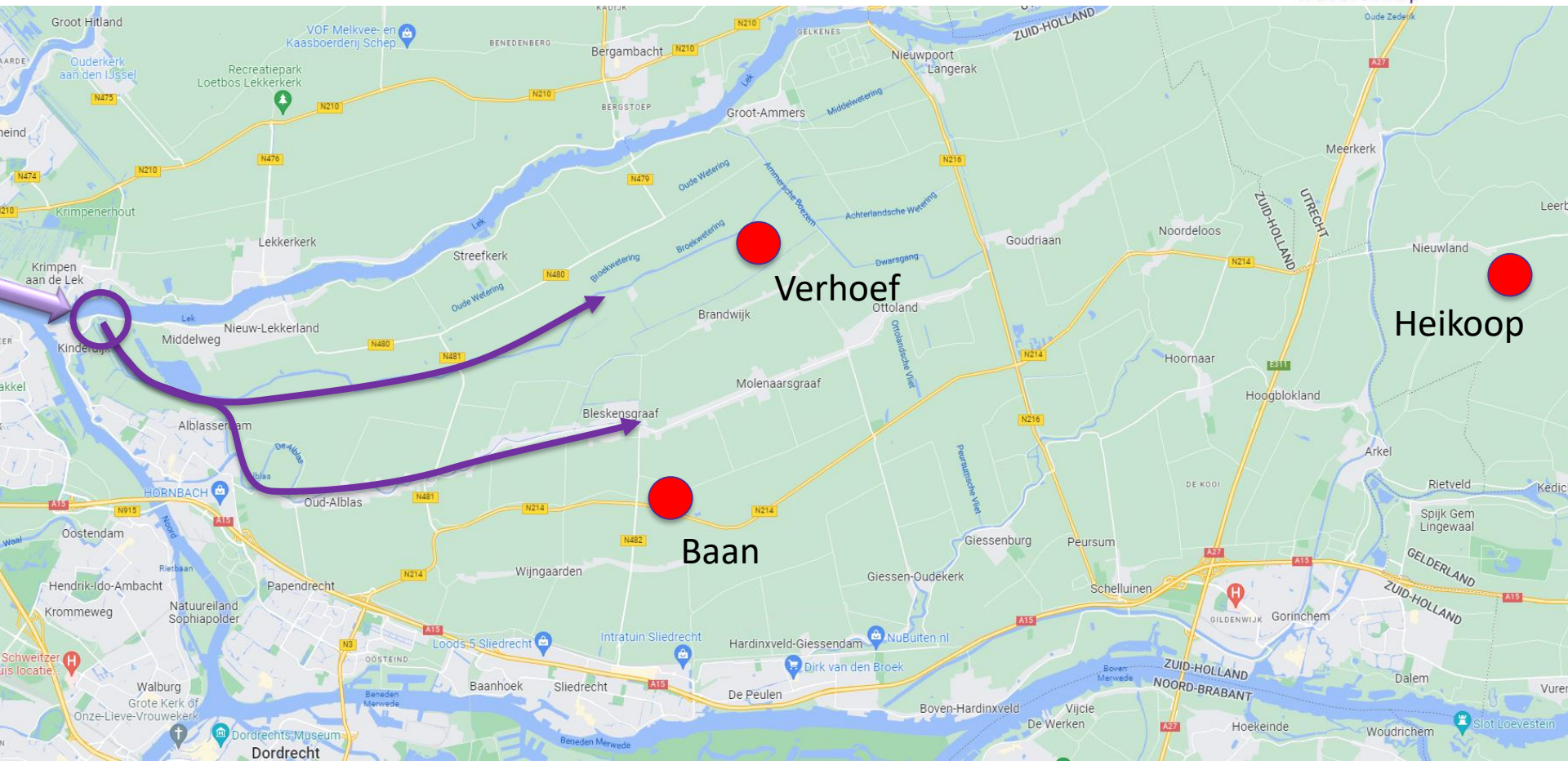
Zouten, Sulfaat (mg/L). Norm 100 mg/L (jaargemiddelde)



Zouten, Chloride (mg/L). 171: boomgaard; 202: aardappels; 217: mais; 250: veedrenking



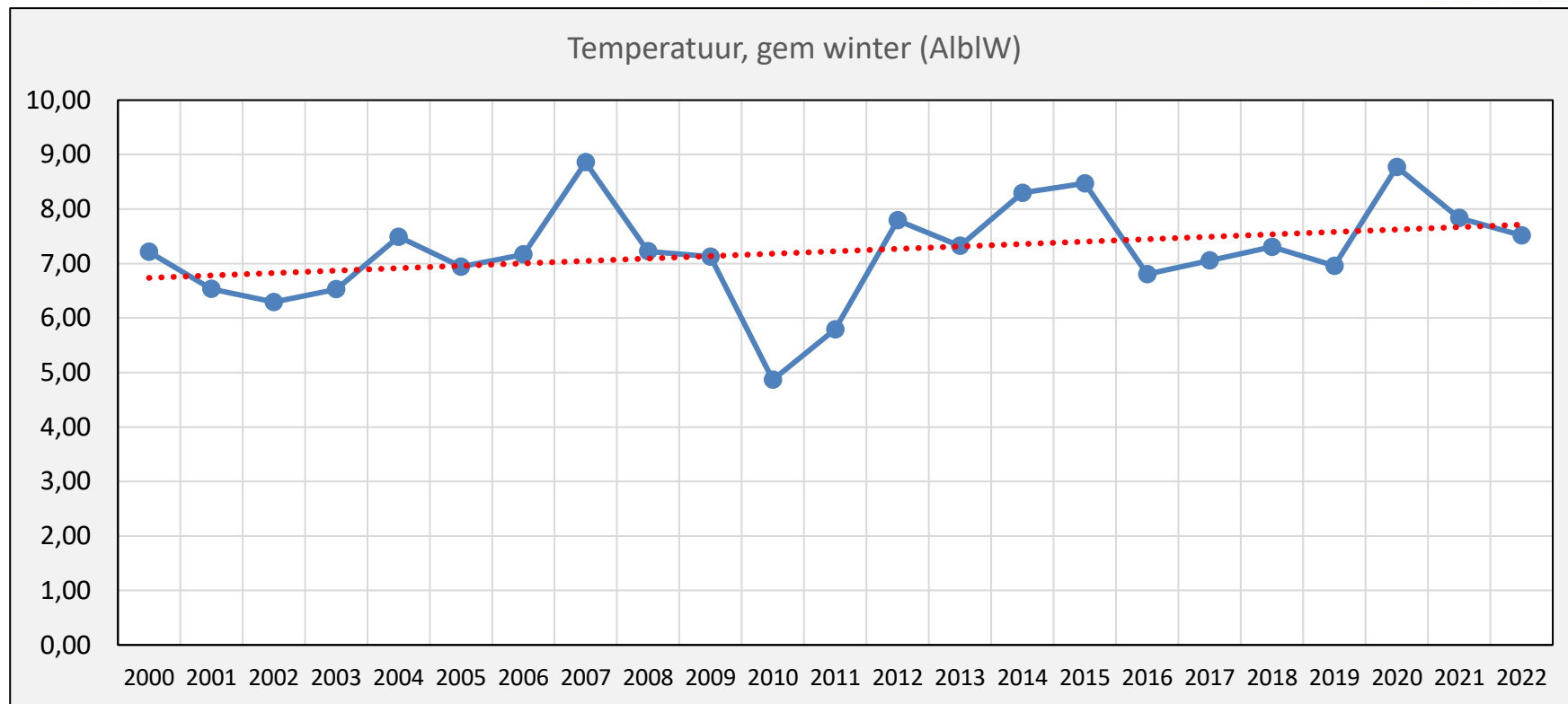
Droge zomer 2022. Inlaat “zout” rivierwater



Zijsprong: Ontwikkelingen temperatuur



Waterschap
Rivierenland



sterke dijken
schoon water

In het kort

- Verschillen binnen seizoenen
- Verschillen tussen deelnemers en individuele percelen
- Bekende patronen van uitspoeling in de winter
- Geen duidelijke verschillen tussen behandelingen
- Duidelijke effecten hitte en droogte in 2022

Vervolgmetingen in 2023

- Doorgaan fysisch-chemische metingen
- Stoppen vegetatieopnames
- In de zomer metingen in drukkasten

